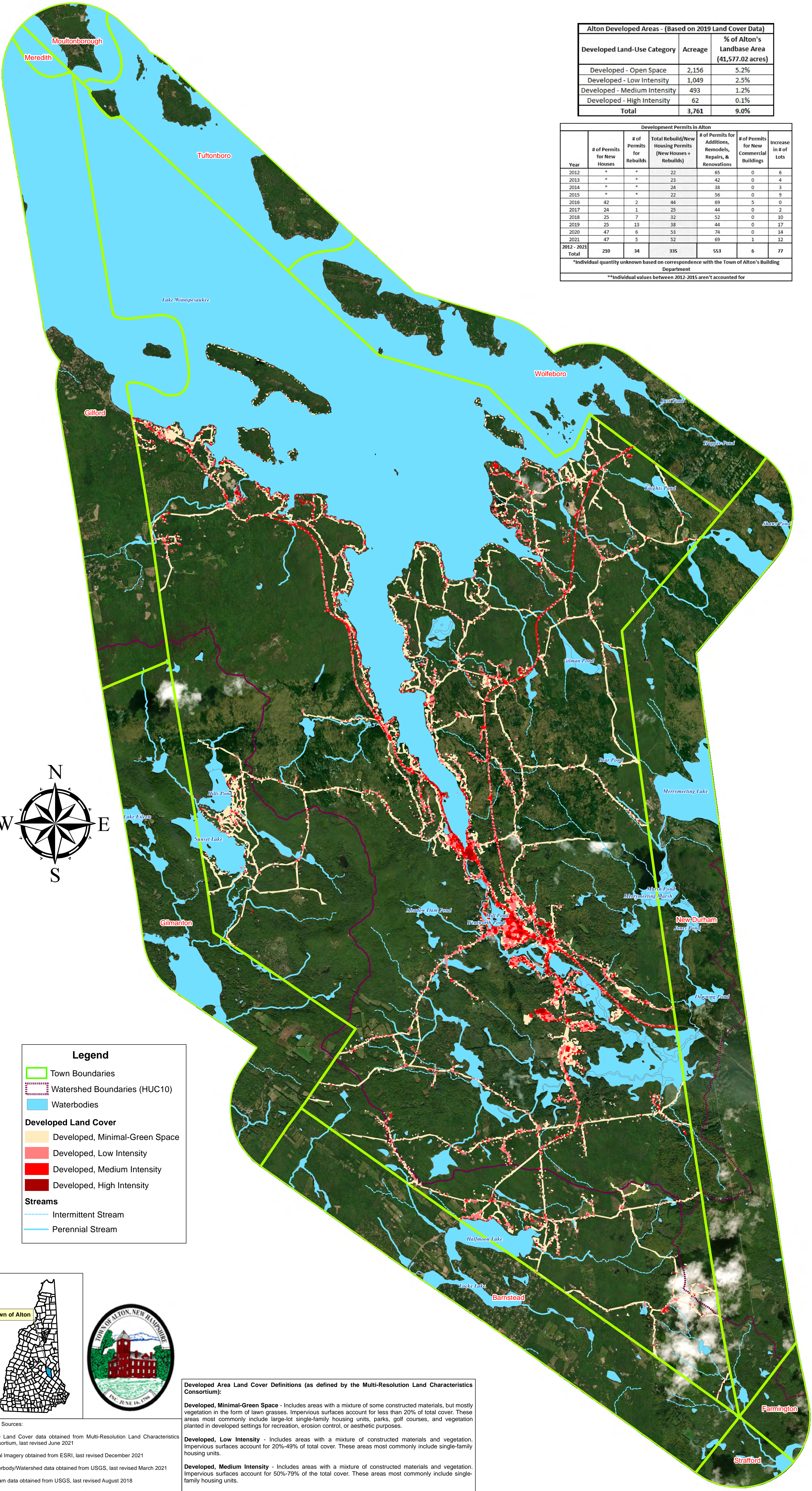


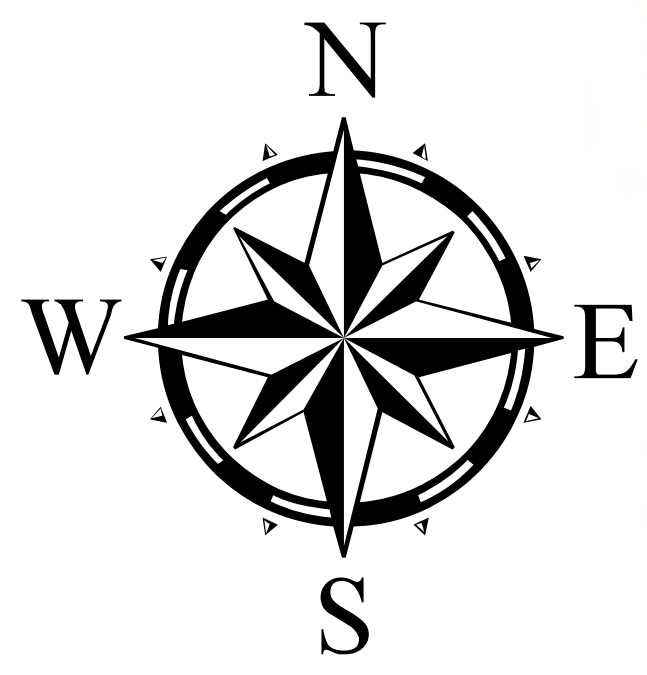
Alton Developed Land Cover



Developed Land-Use Category	Acreage	% of Alton's Landbase Area (41,577.02 acres)
Developed - Open Space	2,156	5.2%
Developed - Low Intensity	1,049	2.5%
Developed - Medium Intensity	493	1.2%
Developed - High Intensity	62	0.1%
Total	3,761	9.0%

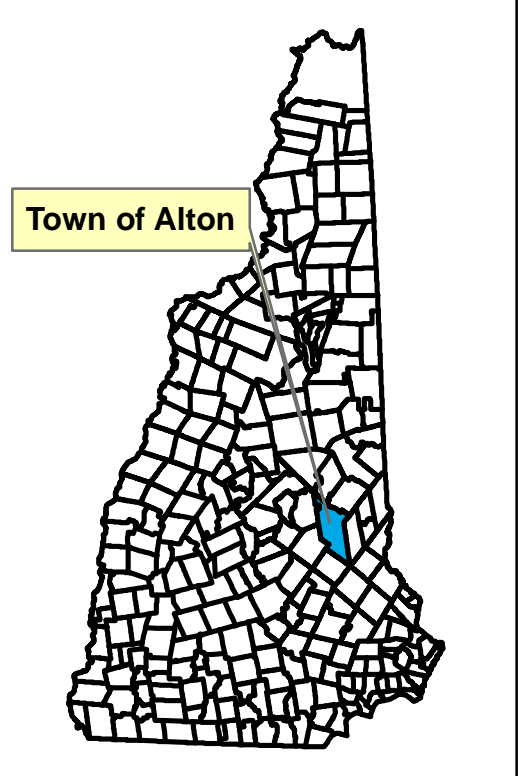
Year	# of Permits for New Houses	# of Permits for Rebuilds	Total Rebuild/New Housing Permits (New Houses + Rebuilds)	# of Permits for Additions, Remodels, Repairs, & Renovations	# of Permits for New Commercial Buildings	Increase in # of Lots
2012	*	*	22	65	0	6
2013	*	*	23	42	0	4
2014	*	*	24	38	0	3
2015	*	*	22	56	0	9
2016	42	2	44	69	5	0
2017	24	1	25	44	0	2
2018	25	7	32	52	0	10
2019	25	13	38	44	0	17
2020	47	6	53	74	0	14
2021	47	5	52	69	1	12
2012 - 2021 Total	210	34	335	553	6	77

*Individual quantity unknown based on correspondence with the Town of Alton's Building Department
 **Individual values between 2012-2015 aren't accounted for



Legend

- Town Boundaries
- Watershed Boundaries (HUC10)
- Waterbodies
- Developed Land Cover**
 - Developed, Minimal-Green Space
 - Developed, Low Intensity
 - Developed, Medium Intensity
 - Developed, High Intensity
- Streams**
 - Intermittent Stream
 - Perennial Stream



Data Sources:
 2019 Land Cover data obtained from Multi-Resolution Land Characteristics Consortium, last revised June 2021
 Aerial Imagery obtained from ESRI, last revised December 2021
 Waterbody/Watershed data obtained from USGS, last revised March 2021
 Stream data obtained from USGS, last revised August 2018
 Town boundary data obtained from NH GRANIT, last revised April 2013

Developed Area Land Cover Definitions (as defined by the Multi-Resolution Land Characteristics Consortium):

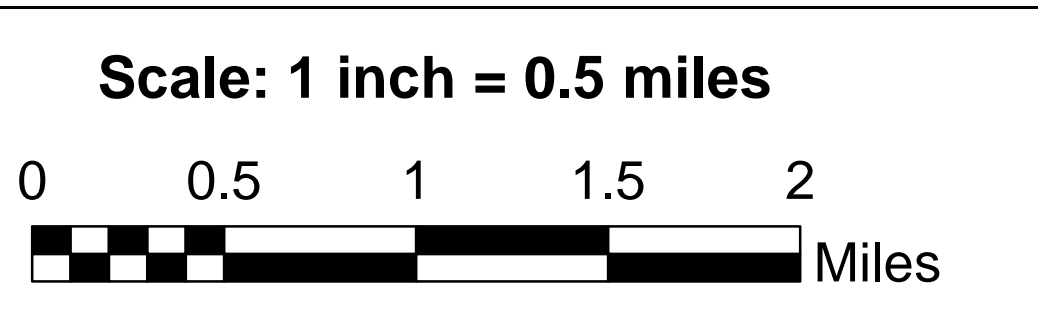
Developed, Minimal-Green Space - Includes areas with a mixture of some constructed materials, but mostly vegetation in the form of lawn grasses. Impervious surfaces account for less than 20% of total cover. These areas most commonly include large-lot single-family housing units, parks, golf courses, and vegetation planted in developed settings for recreation, erosion control, or aesthetic purposes.

Developed, Low Intensity - Includes areas with a mixture of constructed materials and vegetation. Impervious surfaces account for 20%-49% of total cover. These areas most commonly include single-family housing units.

Developed, Medium Intensity - Includes areas with a mixture of constructed materials and vegetation. Impervious surfaces account for 50%-79% of the total cover. These areas most commonly include single-family housing units.

Developed, High Intensity - Includes highly developed areas where people reside or work in high numbers.

Coordinate System: NAD 1983 StatePlane New Hampshire FIPS 2800 Feet
 Projection: Transverse Mercator
 Datum: North American 1983
 False Easting: 984,250.0000
 False Northing: 0.0000
 Central Meridian: -71.6667
 Scale Factor: 1.0000
 Latitude Of Origin: 42.5000
 Units: Foot US



Developed Areas Alton NRI Map
 Created: September 28, 2021
 Last revised: October 6, 2022

Prepared for the Town of Alton, NH
 This map should only be used for planning purposes,
 not for legal bound interpretation.

Stoney Ridge Environmental, LLC
 8 Kiana Road
 Alton, NH 03809
 Phone: 603-776-5825